

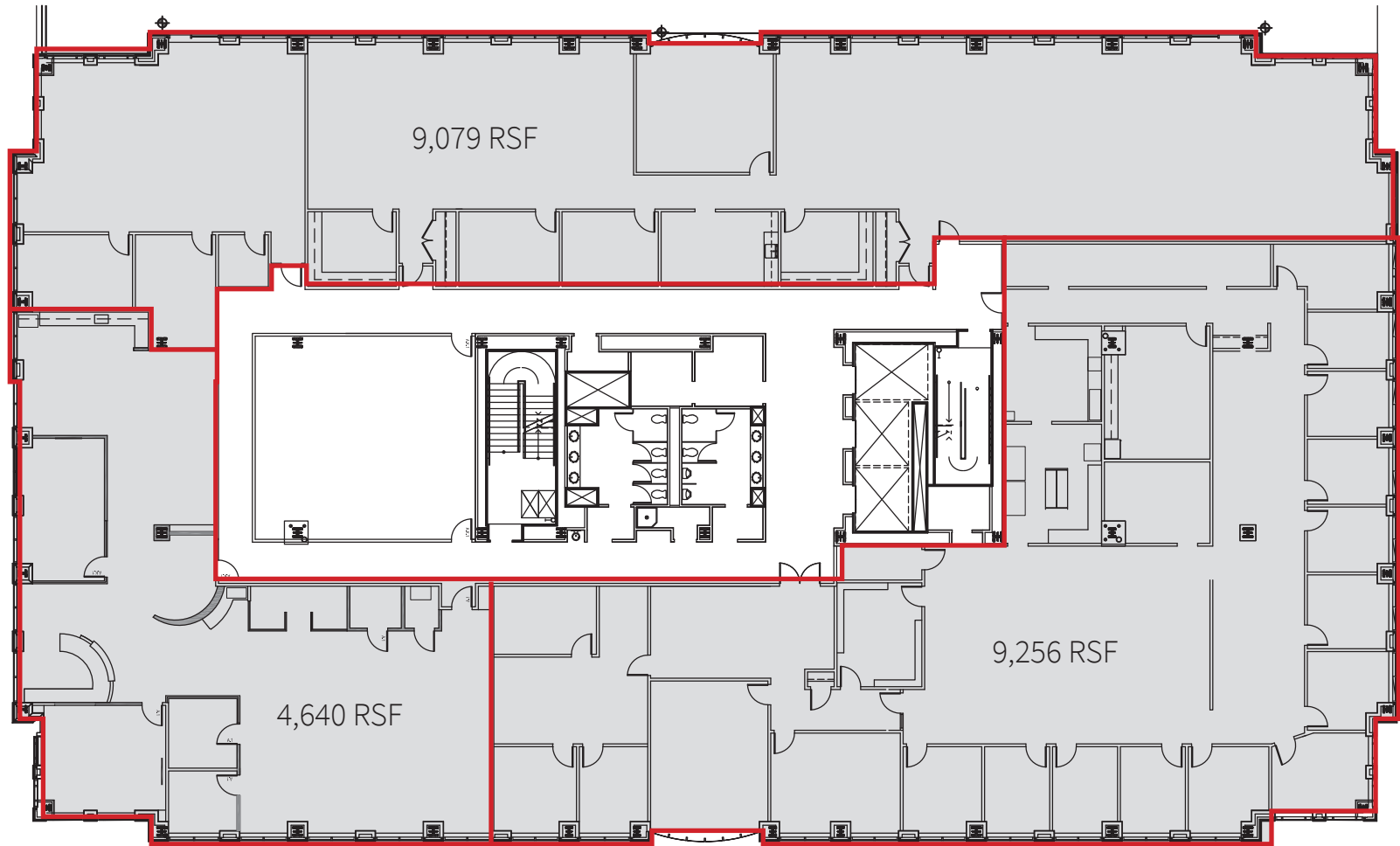
405
NORTH KING STREET
THE RENAISSANCE CENTRE

Availability: FLOOR 3

23,716 RSF total

Available as full floor or individual suites

- 9,079 RSF
- 9,256 RSF
- 4,640 RSF



Leasing
information

Jamie Vari
Vice President
+1 302 356 2862
jamie.vari@am.jll.com

Cindy Fleming
Associate Broker
+ 1 302 356 2866
cindy.fleming@am.jll.com

JLL | Jones Lang LaSalle
222 Delaware Avenue, suite 1610
Wilmington, DE 19801
+1 302 356 2858

