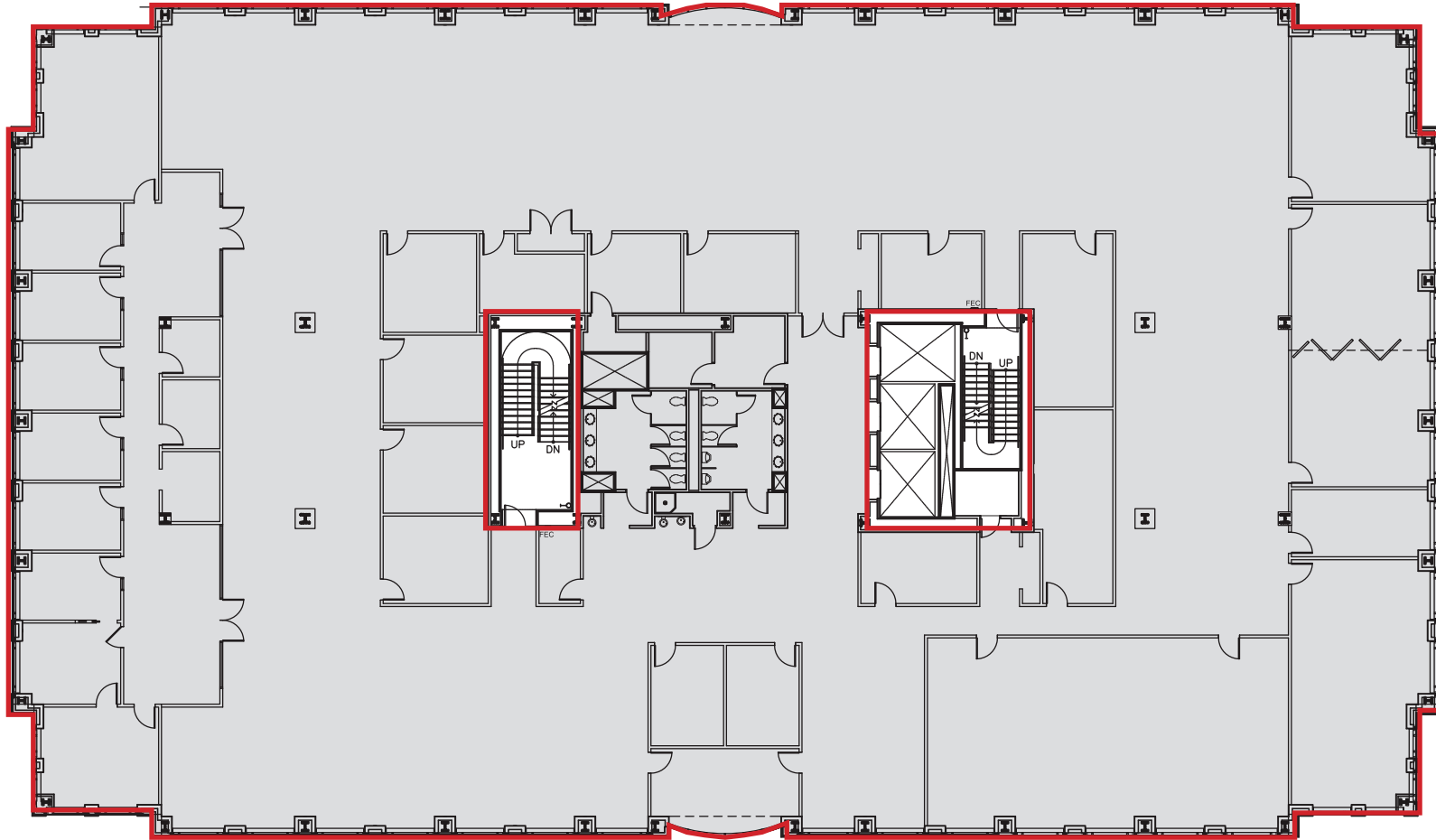


405
NORTH KING STREET
THE RENAISSANCE CENTRE

Availability: FLOOR 6

23,716 RSF

Available as full floor or
space can be demised



Leasing
information

Jamie Vari
Vice President
+1 302 356 2862
jamie.vari@am.jll.com

Cindy Fleming
Associate Broker
+1 302 356 2866
cindy.fleming@am.jll.com

JLL | Jones Lang LaSalle
222 Delaware Avenue, suite 1610
Wilmington, DE 19801
+1 302 356 2858

